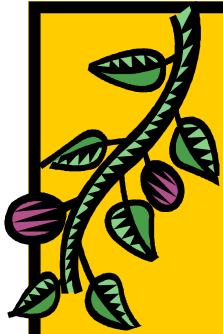




## 2011 Summer Camp Paddington Station Preschool

Paddington Station Summer Camp offers a complete day-camp experience. Each session is built around its own theme. Campers play, sing, explore and grow as they discover the world around them. Your children will connect with nature through hands-on, outdoor exploration.

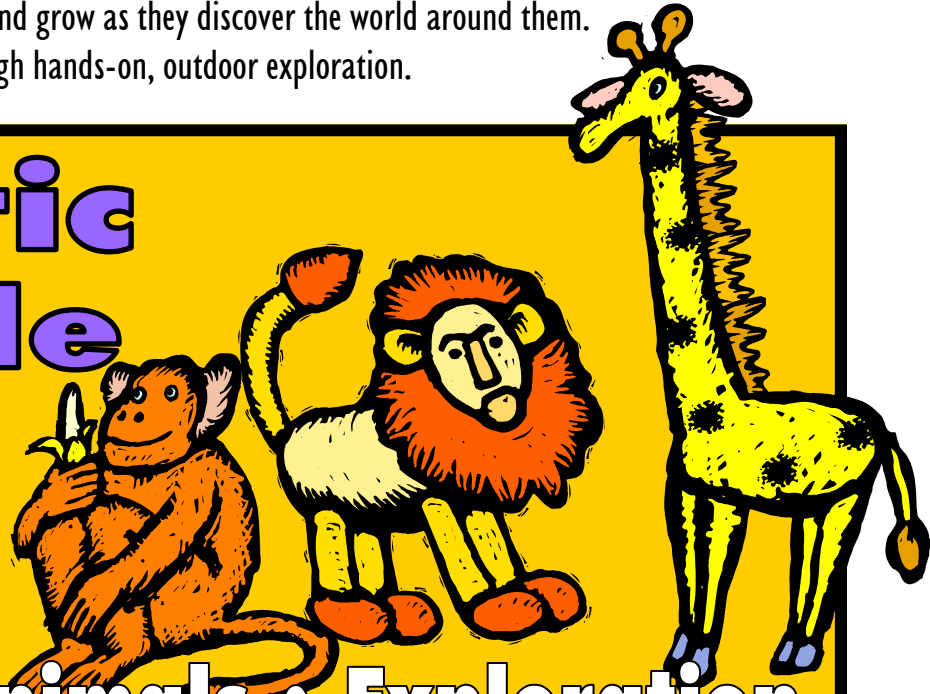


### Mystic Jungle

**Session One**

June 6th—July 1st

**Rainforest • Animals • Exploration**



### Camping Adventure

**Session Two**

July 5th—July 29th

**Forest Animals • Picnics • Fishing**



# 2011 Summer Camp Paddington Station Preschool

## Summer Enrichments 2011


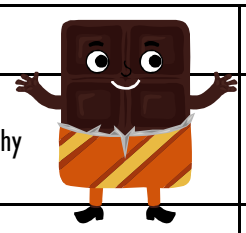

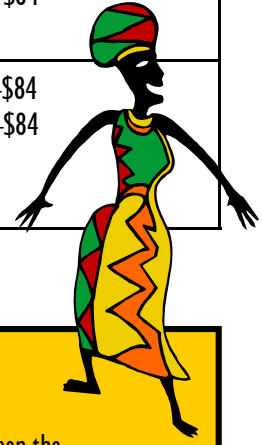
**Ages 3-5 • All Classes 11:30-1:30**

Paddington Station Summer Enrichments are for children ages 3-5. These are focused, innovative classes that capture the curiosity of the campers. You may extend your child's morning class with an Enrichment or enroll just for Enrichment classes.

**Rates based on number of times class meets per session**

**Session One—4 Mondays, 4 Wednesdays, 4 Fridays**

**Session Two— 3 Mondays, (No camp 4th of July) 4 Wednesdays, 4 Fridays**

Day	Name of Class	Price per session
Monday	 <b>Chilly Bites</b> Cool down with smoothies, popsicles and so much more! We will create healthy and delicious treats to beat the summer heat.	 Session 1—\$84 Session 2—\$63
Wednesday	 <b>Music of the World</b> Let's take a trip around the world through music and movement. Children will make instruments, listen to multicultural music, and move to the beat.	Session 1—\$84 Session 2—\$84
Friday	<b>Yoga</b> Campers will learn about stretching and movement in this yoga class geared just for children. Taught by Paddington teacher, Terra Willhoit, a trained yoga instructor.	 Session 1—\$84 Session 2—\$84

## Pre & Post Camp

These week-long sessions extend our summer offerings to provide a fun and active experience for your child between the school-year and camp sessions. Each week's flat fee allows you the flexibility to drop off or pick-up your 3 to 5 year-old anytime between 8:30 and 3:00, Monday through Friday. Each Post Camp session will have its own theme.

### Pre Camp

**May 31-June 3**  
**Splish, Splash, Squish**

### Post Camp

**Week 1—August 1-5 Science Camp**  
**Week 2—August 8-12 Fairy Tales**  
**Week 3- August 15-19 Art & Music Camp**



## 2011 Summer Camp Paddington Station Preschool

# 2011 Summer Camp Registration

**Deposit due with Registration—Balance due May 13th, 2011**

**\$150 deposit for each Camp session and/or Pre/Post Camp session**

**\$20 deposit for each Enrichment Class.**

### Enrollment

- Children will be placed in classes on a first come, first serve basis. Applications will be dated upon receipt.
- There is a minimum enrollment needed to hold each class.— If minimum enrollment for a class is not met, notification of cancellation will be sent.
- Children between 2 years, 6 months and 3 yrs. (by June 1, 2011) must have attended Paddington Station in the 2010/2011 school-year.  
All other programs welcome non-Paddington students ages 3 and up.
- Paddington Station welcomes students of any race, color and national or ethnic origin

### Deposits

- **Deposits are non-transferable and non-refundable.**
- **Due with Registration**
- **\$150 deposit for each Camp session and/or Pre/Post Camp session**
- **\$20 deposit for each Enrichment Class.**

**Forms** - Families will receive paperwork from the office after applications are received.

Name of Child: \_\_\_\_\_  Male  Female Child's date of birth: \_\_\_\_\_

Current Paddington Student If yes, Teachers' Names: \_\_\_\_\_

Names of Parent/s: \_\_\_\_\_

Address: \_\_\_\_\_ Zip \_\_\_\_\_

Phone # \_\_\_\_\_ email \_\_\_\_\_

Allergies: \_\_\_\_\_

**CONTINUED ON BACK ⇨**

# Registration Form



## 2011 Summer Camp Paddington Station Preschool

### Summer Camp 2011

There are multiple classes for each schedule/code. Children will be placed by birthdate.

Session One	Session Two	Code	Age* (Placement determined by birth date)	Schedule	Time	Session One	Session Two	Deposit Due (\$150 each)
		A	2.6 - 3 years	Tuesday & Thursday Morning	8:30 to 11:30	\$305	\$305	\$150
		F	3.6 - 5 years	Monday Through Friday Full Day	8:30 to 3:00	\$1275	\$1215	\$150
		D	2.8-3, 3, 4, & 5 years	Monday, Wednesday & Friday Morning	8:30 to 11:30	\$370	\$340	\$150
		E	3, 4 & 5 years	Monday, Wednesday & Friday Full Day	8:30 to 3:00	\$805	\$740	\$150
		C	3,4 & 5 years	Tuesday & Thursday Full Day	8:30 to 3:00	\$540	\$540	\$150
		B	3, 4 & 5 years	Tuesday & Thursday Morning	8:30 to 11:30	\$265	\$265	\$150

### Summer Enrichments 2011

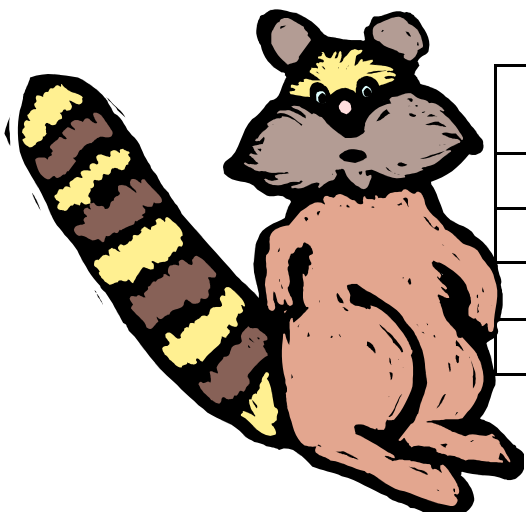
Must be 3 years-old by June 1, 2011

All Classes 11:30-1:30

Session One	Session Two	Enrichment	Day	Age on June 1, 2011	Session One	Session Two	Deposit Due (\$20 each class)
			Mon		\$84	\$63	\$20
			Wed		\$84	\$84	\$20
			Fri		\$84	\$84	\$20

### Pre/Post Camp 2011

Must be 3 years-old by June 1, 2011



✓	Dates	Age on June 1, 2011	Cost	Deposit Due (\$150 each session)
	Pre Camp May 31-June 3		\$265	\$150
	Post Camp August 1st-5th		\$330	\$150
	Post Camp August 8th-12th		\$330	\$150
	Post Camp August 15th-19th		\$330	\$150

**Total Deposit Due:**